

UX-T550

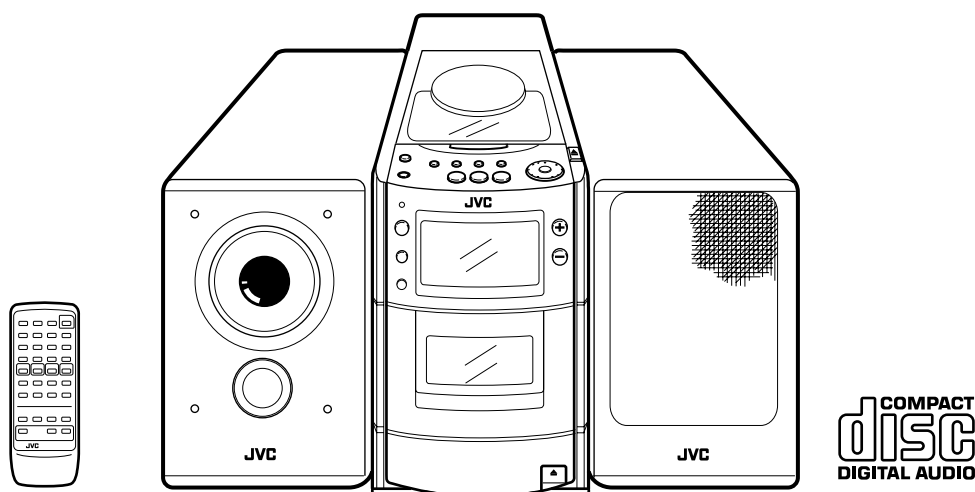
JVC

SCHEMATIC DIAGRAMS

MICRO COMPONENT SYSTEM

UX-T550

CD-ROM No.SML200101



Area Suffix

B ----- U.K.
E ----- Continental Europe
EN ----- Northern Europe
EV ----- Eastern Europe
EE ----- Russian Federation

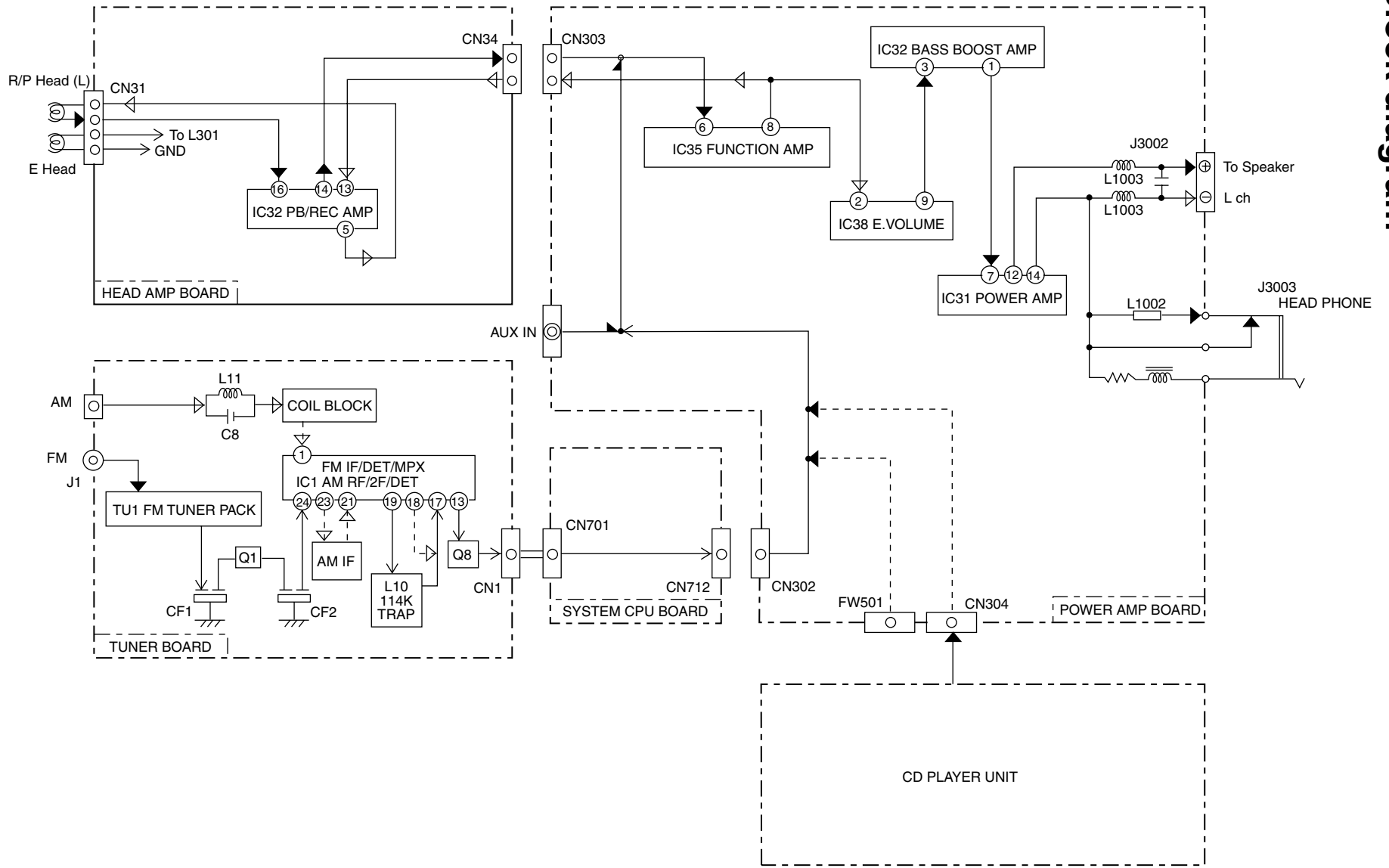
Contents

Block diagram	2-1
Standard schematic diagrams	2-3
Printed circuit boards	2-8~2-10

A

B

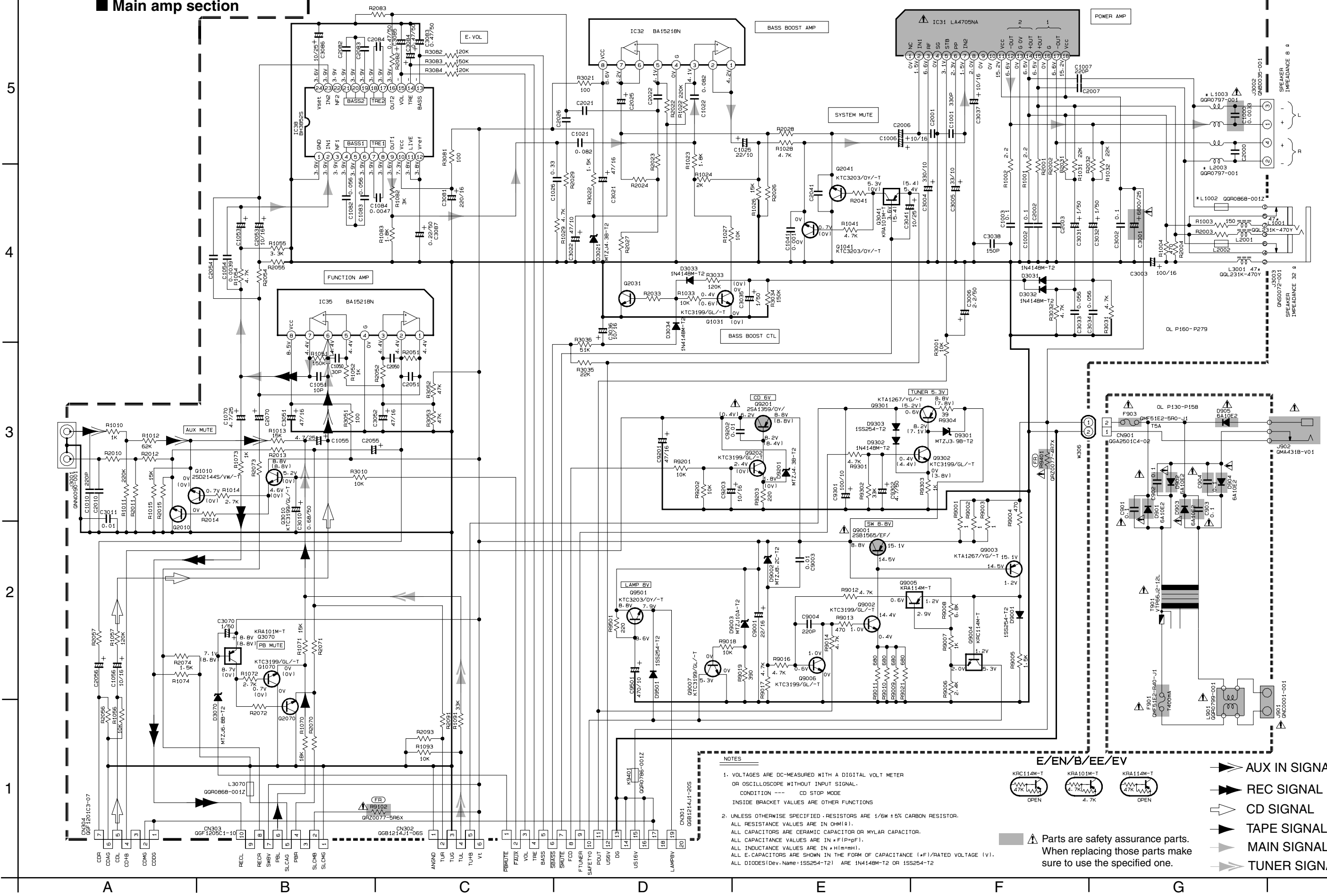
C



Block diagram

Standard schematic diagrams

■ Main amp section



NOTES

- VOLTAGES ARE DC-MEASURED WITH A DIGITAL VOLT METER OR OSCILLOSCOPE WITHOUT INPUT SIGNAL.
CONDITION --- CD STOP MODE
INSIDE BRACKET VALUES ARE OTHER FUNCTIONS
- UNLESS OTHERWISE SPECIFIED, RESISTORS ARE 1/6W ± 5% CARBON RESISTOR.
ALL RESISTANCE VALUES ARE IN OHM(S).
ALL CAPACITORS ARE CERAMIC CAPACITOR OR MYLAR CAPACITOR.
ALL CAPACITANCE VALUES ARE IN μF(P+PF).
ALL INDUCTANCE VALUES ARE IN mH(mmH).
ALL E-CAPACITORS ARE SHOWN IN THE FORM OF CAPACITANCE (μF)/RATED VOLTAGE (V).
ALL DIODES(Dev. Name: 1SS254-T2) ARE 1N4148M-T2 OR 1SS254-T2

E/EN/B/EE/EV

Parts are safety assurance parts. When replacing those parts make sure to use the specified one.

■ LCD & KEY Control section

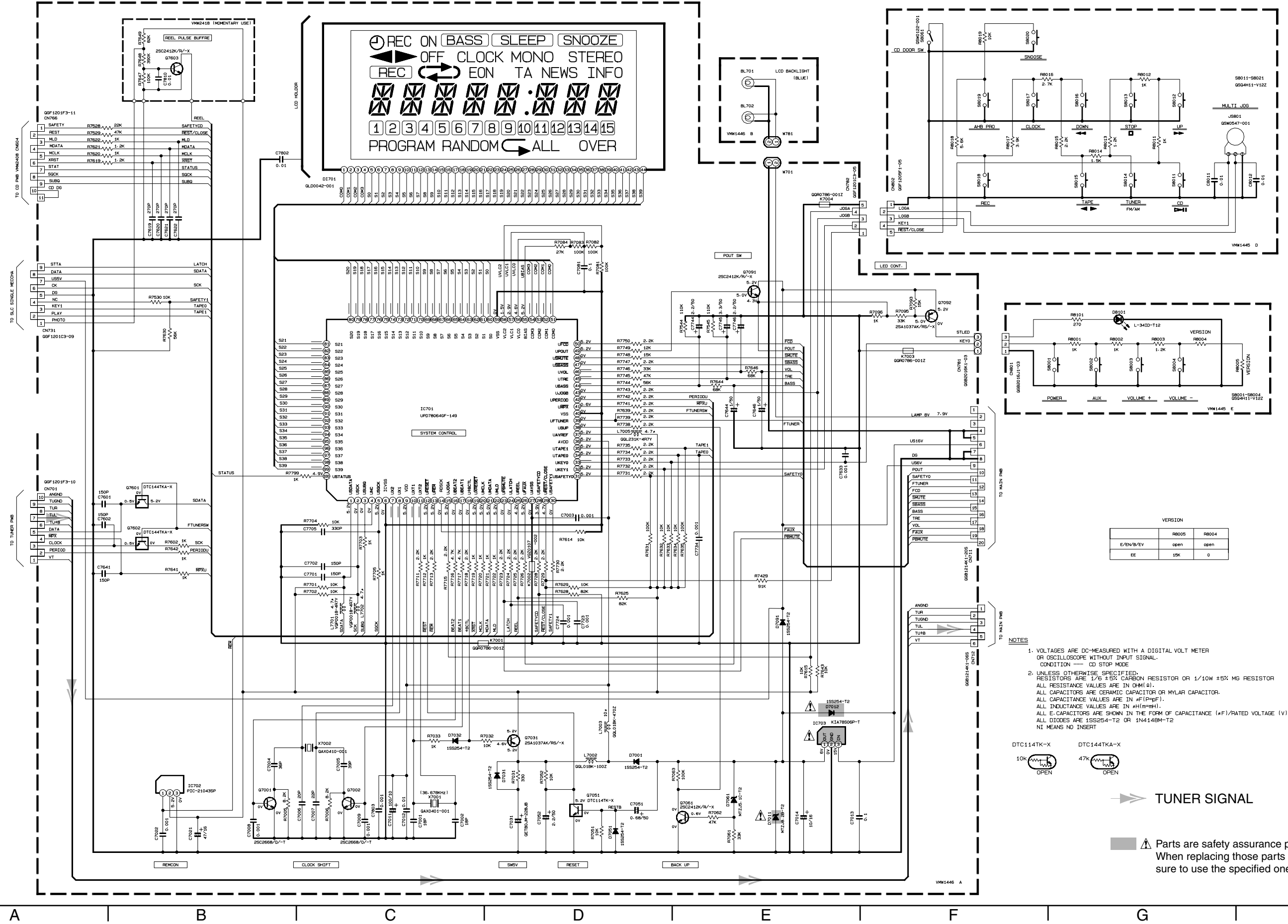
5

4

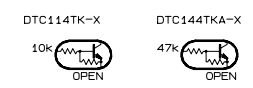
3

2

1



- NOTES
- VOLTAGES ARE DC-MEASURED WITH A DIGITAL VOLT METER OR OSCILLOSCOPE WITHOUT INPUT SIGNAL.
CONDITION — CD STOP MODE
 - UNLESS OTHERWISE SPECIFIED, RESISTORS ARE 1/6 ±5% CARBON RESISTOR OR 1/10W ±5% MG RESISTOR. ALL RESISTANCE VALUES ARE IN OHM (Ω). ALL CAPACITORS ARE CERAMIC CAPACITOR OR MYLAR CAPACITOR. ALL CAPACITANCE VALUES ARE IN #F(PpF). ALL INDUCTANCE VALUES ARE IN #H(M=MH). ALL E-CAPACITORS ARE SHOWN IN THE FORM OF CAPACITANCE (#F)/RATED VOLTAGE (V). ALL DIODES ARE 1SS254-T2 OR 1N4148M-T2. NT MEANS NO INSERT.



TUNER SIGNAL

▲ Parts are safety assurance parts. When replacing those parts make sure to use the specified one.

A B C D E F G

Head amp & Mecha control section

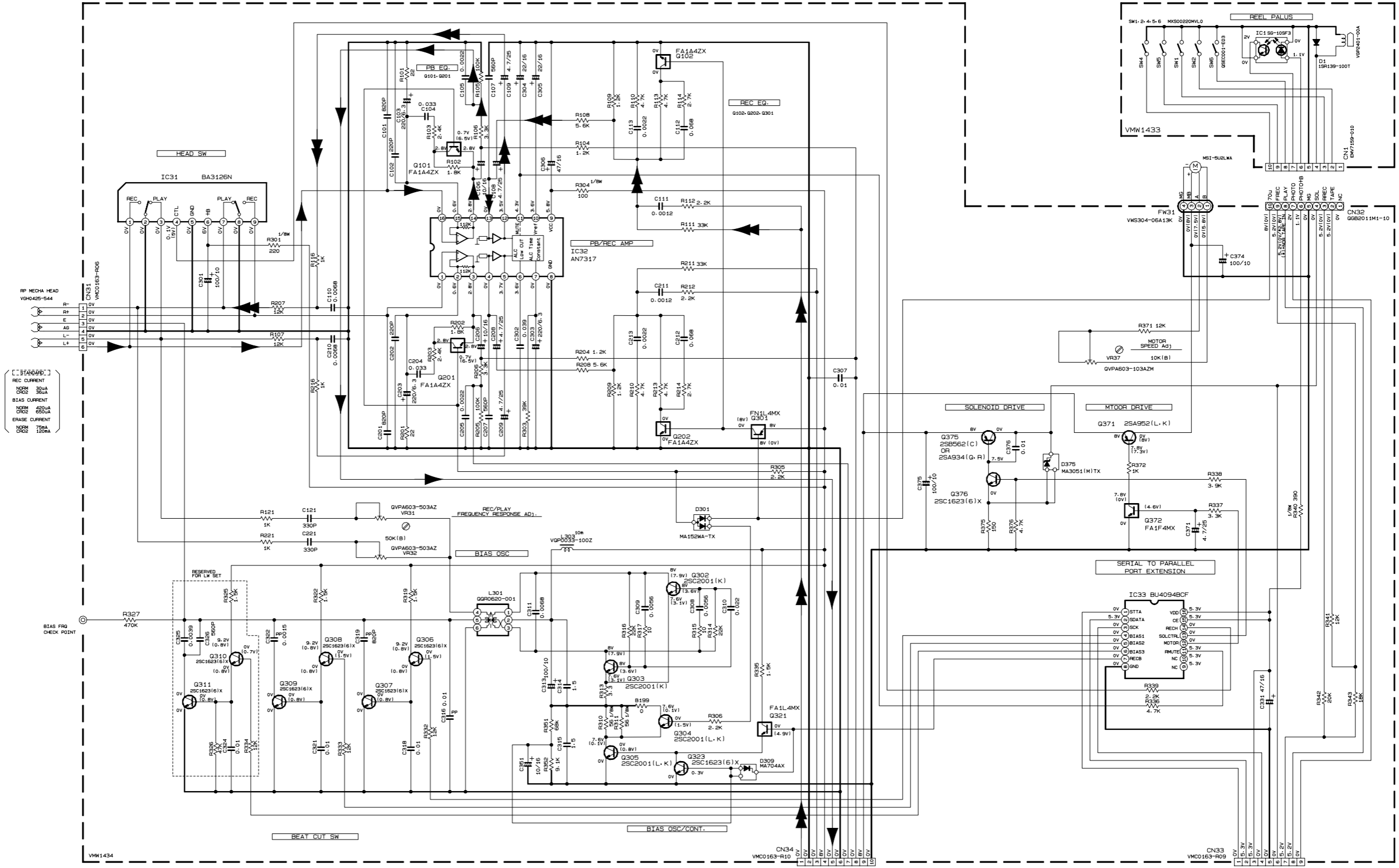
5

4

3

2

1



REC CURRENT
 NORM 300A
 CROS 300A
 BIAS CURRENT
 NORM 4500A
 CROS 6500A
 ERASE CURRENT
 NORM 750A
 CROS 1000A

NOTES

1. VOLTAGES ARE DC-MEASURED WITH A DIGITAL VOLT METER OR OSCILLOSCOPE WITHOUT INPUT SIGNAL. CONDITION : MECHA STOP MODE

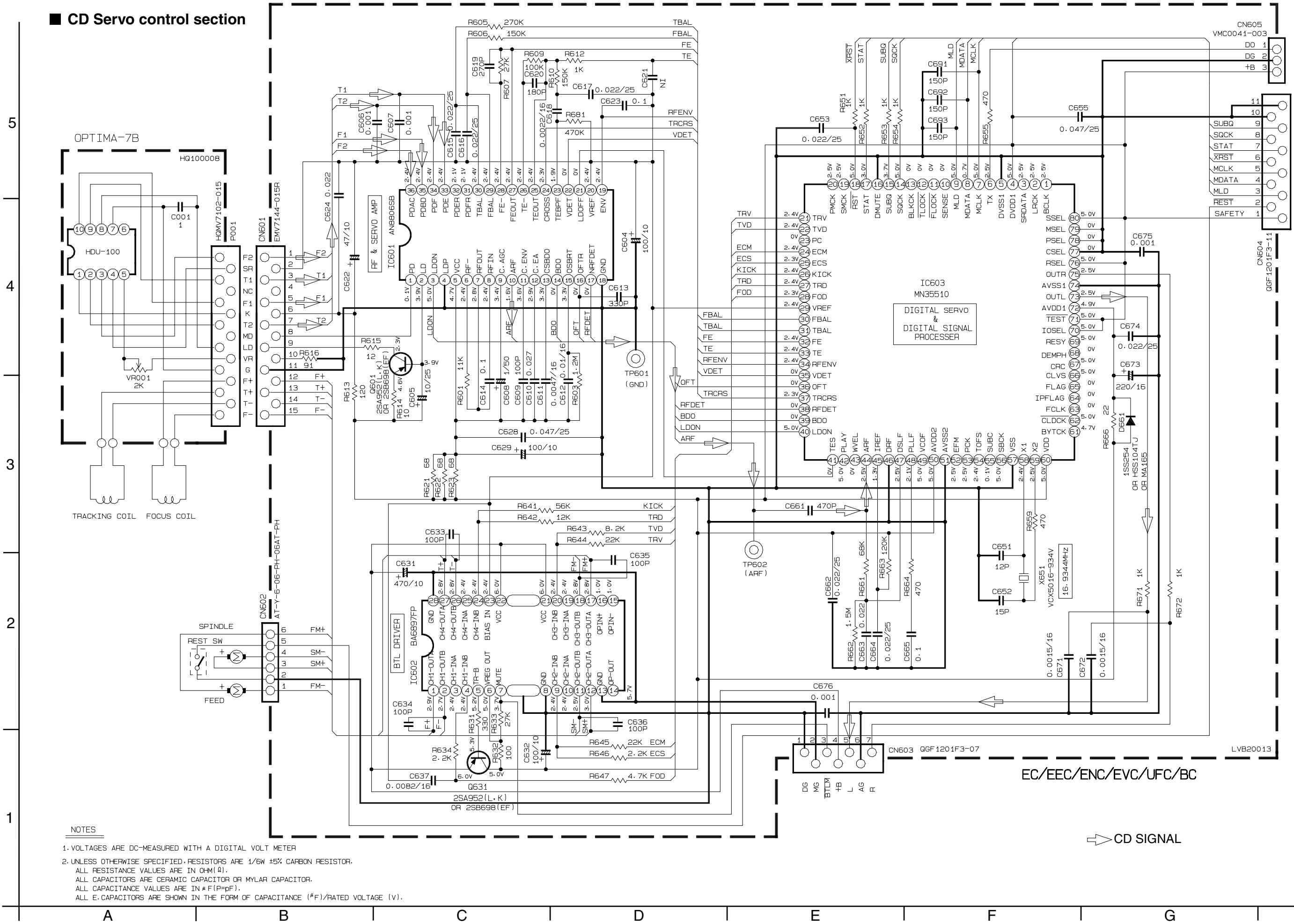
2. UNLESS OTHERWISE SPECIFIED, RESISTORS ARE 1/10W ±5% METAL GLAZE RESISTOR. ALL RESISTANCE VALUES ARE IN OHM(Ω). ALL CAPACITORS ARE CERAMIC CAPACITOR OR MYLAR CAPACITOR. ALL CAPACITANCE VALUES ARE IN #F(#100P). ALL INDUCTANCE VALUES ARE IN #H(#MH). ALL E-CAPACITORS ARE SHOWN IN THE FORM OF CAPACITANCE (#F)/RATED VOLTAGE (V). POLYPROPYLENE CAPACITOR

PARTS	NAME	REF. NO
	FA1A4ZX	Q101-Q201
	FN1L4MX	Q301
	FA1L4MX	Q301
	FA1F4MX	Q371

E/EN/EV/B/EE/UF

➔ REC SIGNAL
 ➔ TAPE SIGNAL

CD Servo control section

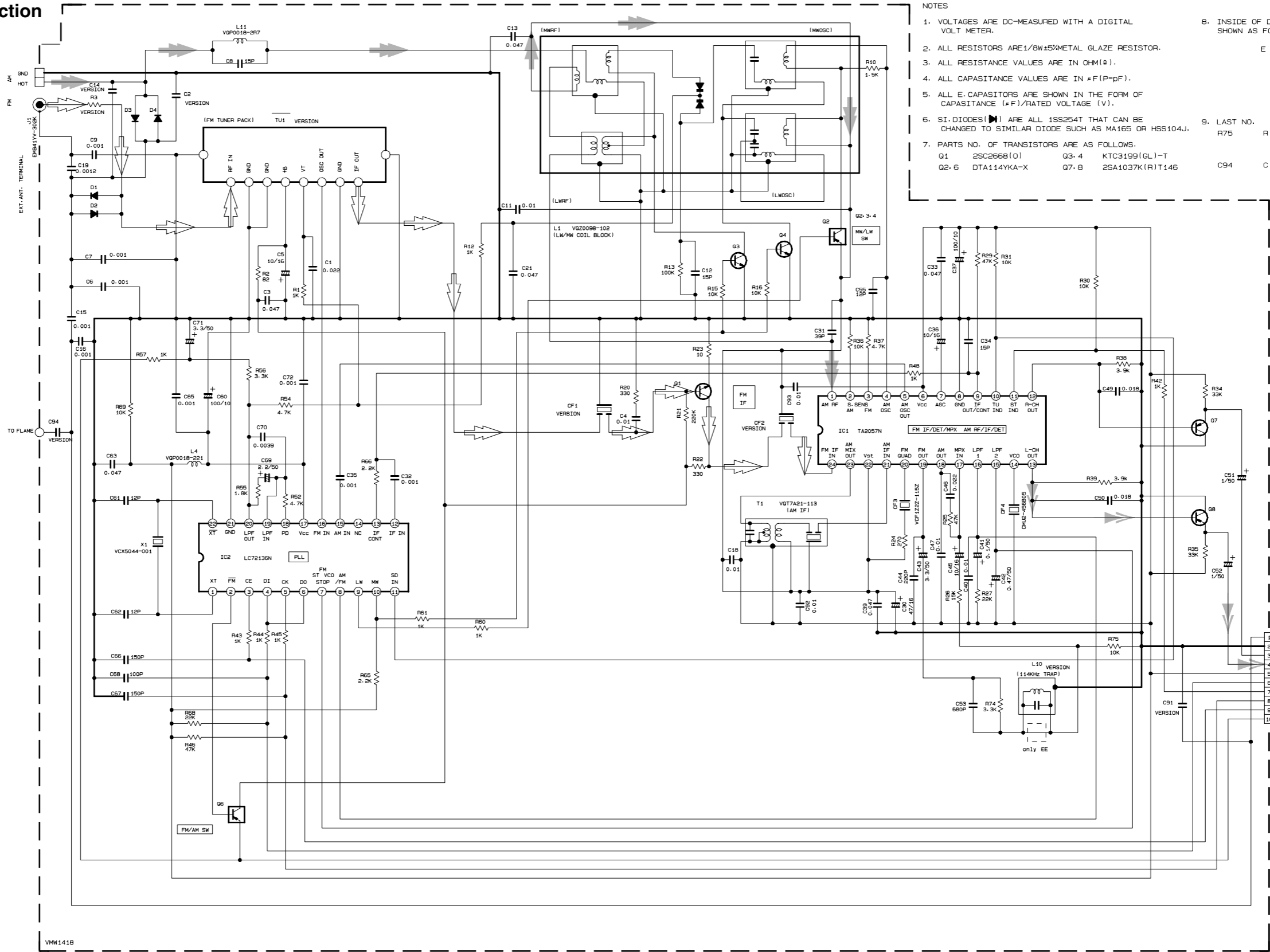


NOTES

1. VOLTAGES ARE DC-MEASURED WITH A DIGITAL VOLT METER
2. UNLESS OTHERWISE SPECIFIED, RESISTORS ARE 1/6W ±5% CARBON RESISTOR. ALL RESISTANCE VALUES ARE IN Ω(M|K). ALL CAPACITORS ARE CERAMIC CAPACITOR OR MYLAR CAPACITOR. ALL CAPACITANCE VALUES ARE IN #F(P=PF). ALL E. CAPACITORS ARE SHOWN IN THE FORM OF CAPACITANCE (#F)/RATED VOLTAGE (V).

△ CD SIGNAL

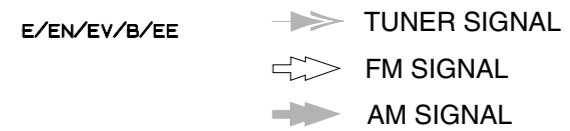
Tuner section



- NOTES**
1. VOLTAGES ARE DC-MEASURED WITH A DIGITAL VOLT METER.
 2. ALL RESISTORS ARE 1/8W±5%METAL GLAZE RESISTOR.
 3. ALL RESISTANCE VALUES ARE IN OHM(Ω).
 4. ALL CAPASITANCE VALUES ARE IN #F(P=pF).
 5. ALL E-CAPASITORS ARE SHOWN IN THE FORM OF CAPASITANCE (#F)/RATED VOLTAGE (V).
 6. SI-DIODES (▶) ARE ALL 1SS254T THAT CAN BE CHANGED TO SIMILAR DIODE SUCH AS MA16S OR HSS104J.
 7. PARTS NO. OF TRANSISTORS ARE AS FOLLOWS.
Q1 2SC2668(O) Q3, 4 KTC3199(GL)-T
Q2, 6 DTA114YKA-X Q7, 8 2SA1037K(R)T146
 8. INSIDE OF DIGITAL TRANSISTORS ARE SHOWN AS FOLLOWS.
E O DTA114YK C
A 10K
B
 9. LAST NO. BLANK NO.
R75 R 4-9, 11, 14, 17-19, 28, 32, 33
40, 41, 47, 49-51, 53, 58, 59
62-64, 67, 68, 70-73
C94 C 10, 17, 20, 22-29, 38, 48, 54
56-59, 64, 73-90

CONDITION	PIN NO.	1	2	3	4	5	6	7	8	9	10	11	12	13	14	15	16	17	18	19	20	21	22	23	24
IC1	FM NO SIGNAL	2.0	0.5	0	2.0	5.1	5.1	0	0	0.3	5.1	5.1	1.1	1.1	4.4	3.7	3.7	1.4	0	1.3	1.1	2.0	2.0	5.1	2.0
	FM 60dB STEREO	2.0	0.5	0	2.0	5.1	5.1	1.1	0	0.3	0	0	1.1	1.1	4.3	4.1	3.7	1.4	0	1.4	1.1	2.0	2.0	5.1	2.0
	AM NO SIGNAL	2.0	0.5	0	2.0	5.0	5.1	0	0	0.3	5.1	5.1	1.1	1.1	4.5	0.1	0	1.4	1.4	1.5	1.6	2.0	2.0	5.1	2.0
IC2	FM NO SIGNAL	2.4	0	0	5.1	4.9	5.1	3.7	3.7	2.0	3.8	5.1	0	0	0	0	2.6	5.1	1.0	1.0	3.7	0	2.7		
	FM 522KHz NO SIGNAL	0	0	0	8.8	0	8.7	1.6	0	1.1	1.6	0	1.1												

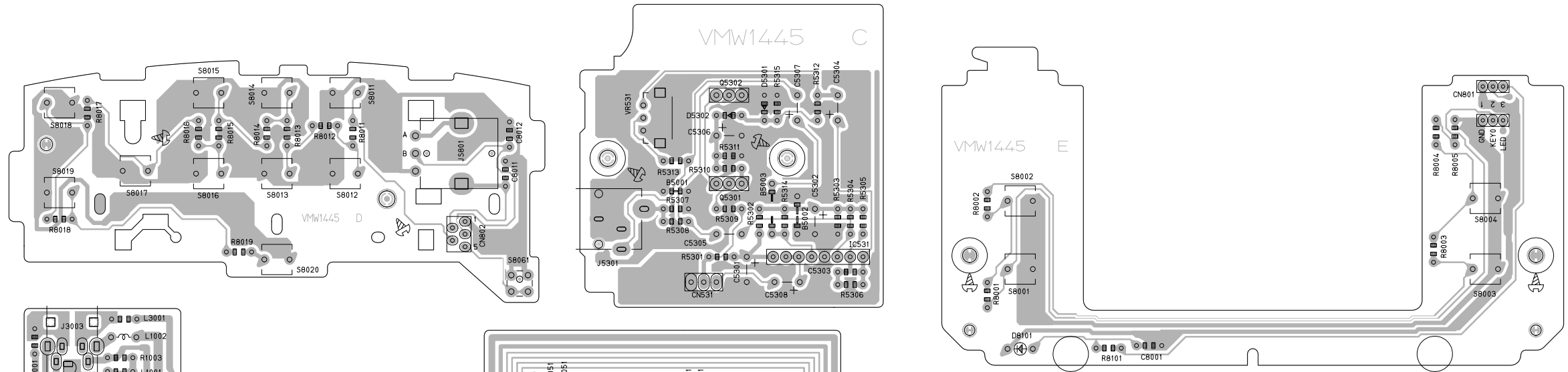
Tr. NO.	Q1	Q6	Q7	Q8									
PIN NO.	E C B E C B E C B E C B												
FM 87.5MHz NO SIGNAL	0	7.5	0.7	8.8	8.7	0	1.6	0	1.1	1.6	0	1.1	
AM 522KHz NO SIGNAL	0	0	0	8.8	0	8.7	1.6	0	1.1	1.6	0	1.1	



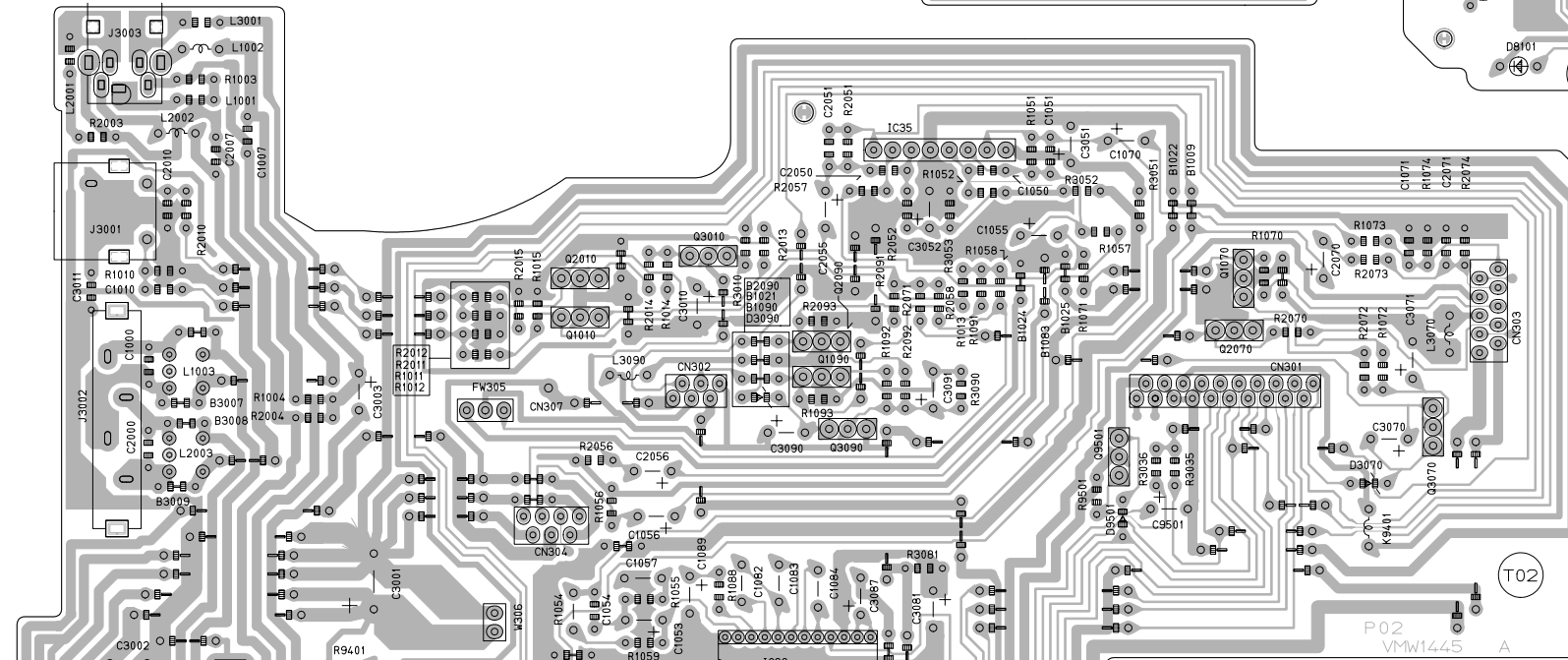
Printed circuit boards

■ Main board

5



4



3

2

1

A

B

C

D

E

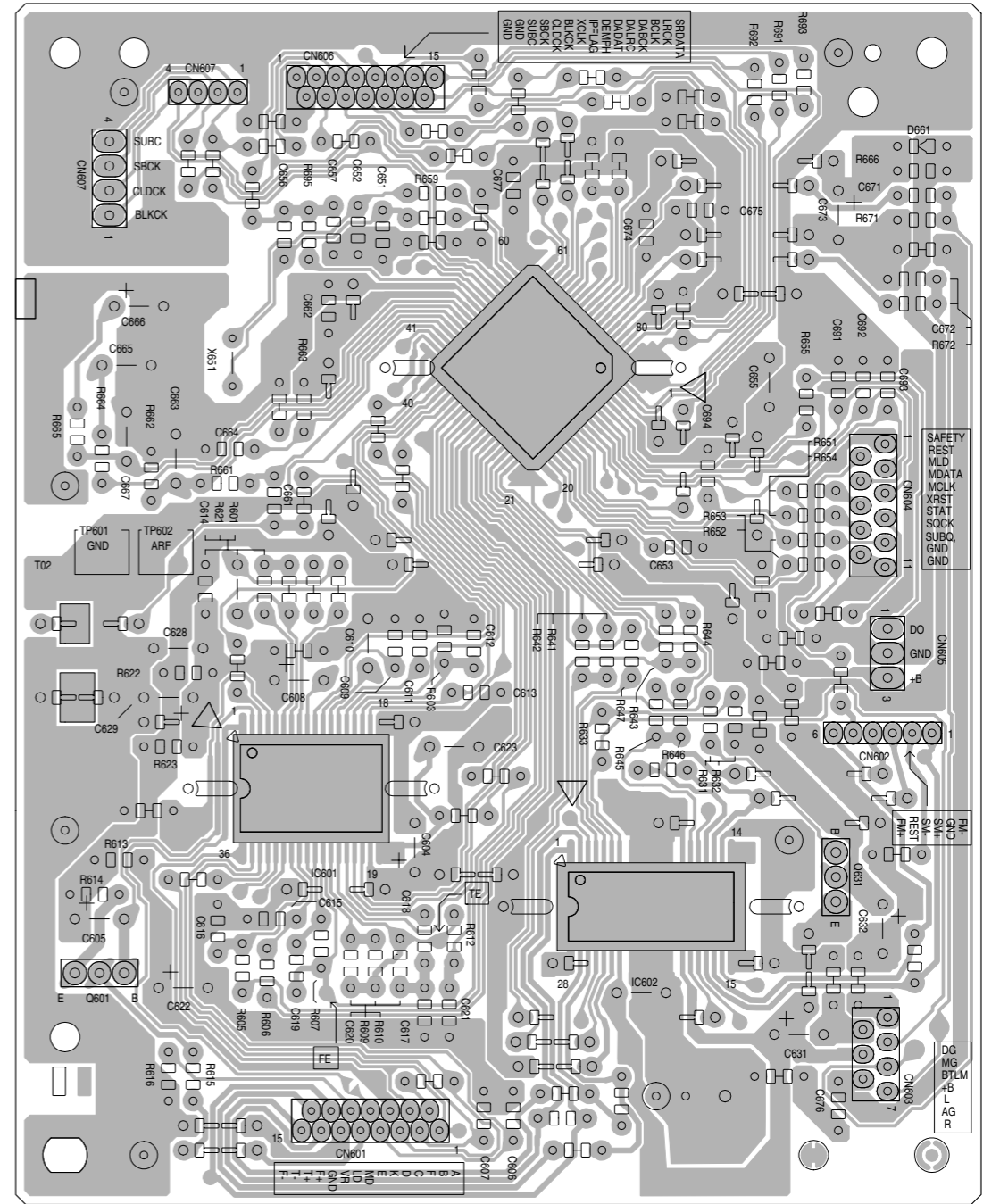
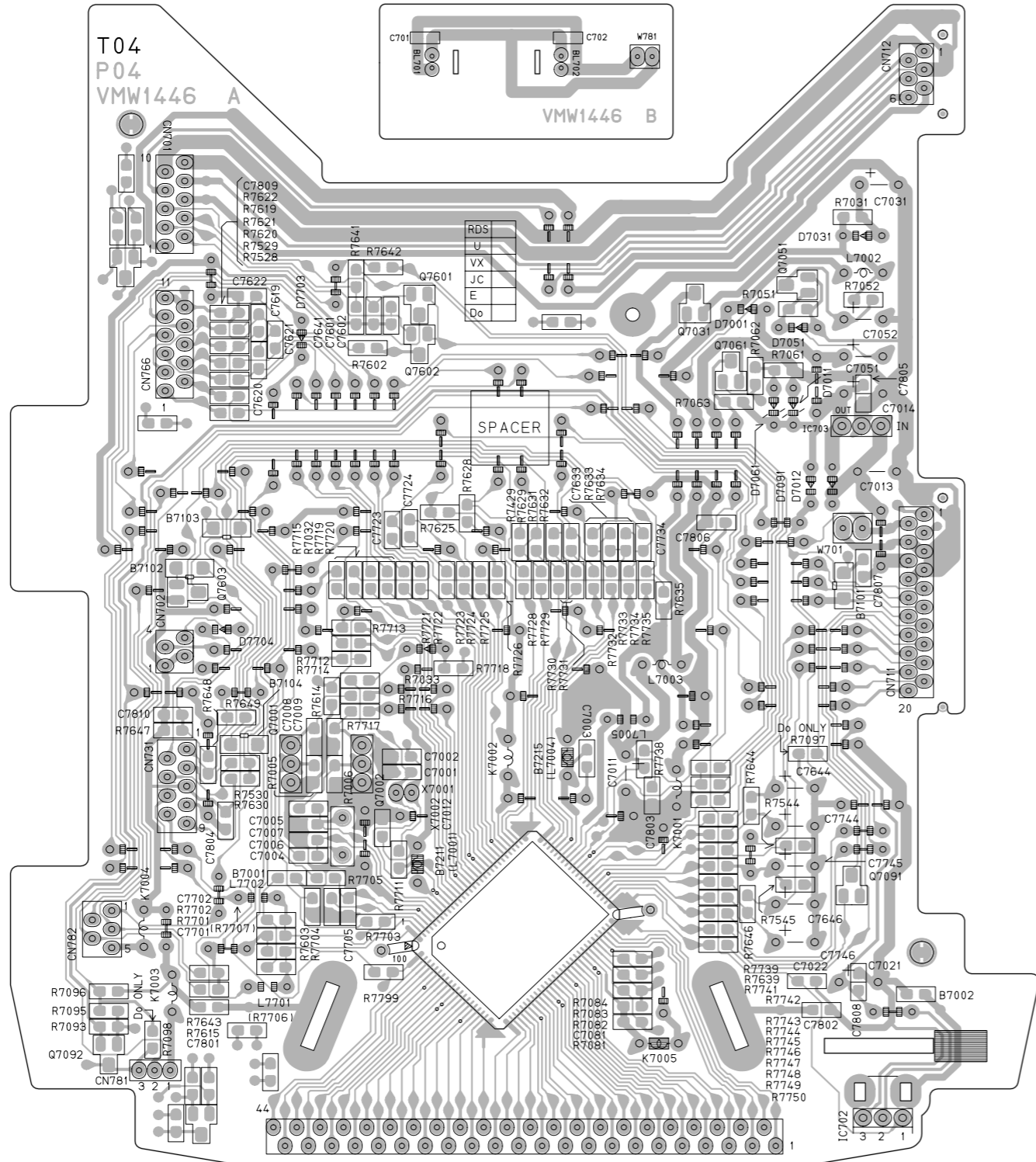
F

G

■ LCD system & CPU board

■ CD servo control board

5
4
3
2
1



A B C D E F G 2-9

UX-T550

JVC

VICTOR COMPANY OF JAPAN, LIMITED
AUDIO & COMMUNICATION BUSINESS DIVISION
PERSONAL & MOBILE NETWORK BUSINESS UNIT. 10-1, 1Chome, Ohwatari-machi, Maebashi-city, 371-8543, Japan

No.20908SCH

 Printed in Japan
200011(V)